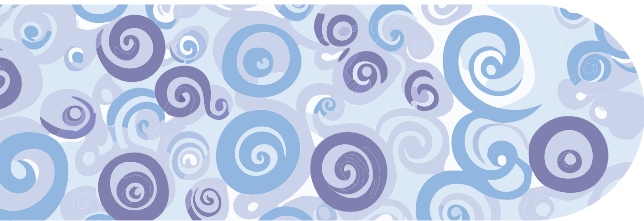


Your Support Matters!



GIVE PEACE . GIVE SAFETY. GIVE HOPE

A Better Way depends on financial contributions to provide quality services to persons in need. Please visit our website to donate online or mail monetary donations to:

A Better Way Services, Inc.

 **PO Box 734
Muncie, IN 47308**

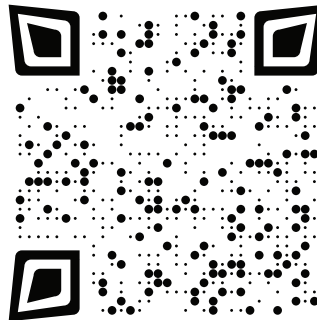
>>> abetterwaymuncie.org/donate

MAJOR SOURCES OF FUNDING






- ALPHA CHI OMEGA
- THE COMMUNITY FOUNDATION OF MUNCIE & DELAWARE COUNTY
- DIVISION OF MENTAL HEALTH AND ADDICTION
- EMERGENCY FOOD AND SHELTER PROGRAM
- HUD
- INDIANA CRIMINAL JUSTICE INSTITUTE
- INDIANA HOUSING & COMMUNITY DEVELOPMENT AUTHORITY
- INDIANA CRIMINAL JUSTICE INSTITUTE
- MUNCIE COMMUNITY DEVELOPMENT
- NAVIENT FOUNDATION
- REGION VII - REGIONAL SERVICES COUNCIL
- HEART OF INDIANA UNITED WAY
- VIBRANT + 988 SUICIDE & CRISIS LIFELINE
- WAYNE COUNTY FOUNDATION
- PSI IOTA XI

Contact

Available 24/7



 SCAN ME

-  Muncie: 765.747.9107
-  Richmond: 765.966.0538
-  Crisis Support: 765.288.4357
-  988 Suicide & Crisis Lifeline
-  abetterwaymuncie.org



 a better way

WE'RE HERE TO HELP!



Our Supporters



Our Mission

To reduce domestic abuse, sexual assault, suicide and homelessness through service, shelter, crisis intervention and prevention initiatives.



About Us

A Better Way provides shelter and services for survivors of domestic violence and sexual assault, a walk-in Rape Crisis Center, mobile advocacy, individual trauma-informed counseling, support groups, transitional housing, rapid re-housing, homeless resources and assistance, a 24/7 suicide and crisis support line, education and referrals, bullying, teen dating violence and domestic violence prevention programs, and a check-in call service for older or disabled homebound persons.

CALL 988

In cooperation with the 988 Suicide & Crisis Lifeline, A Better Way provides 24/7 regional hotline support for persons feeling suicidal or in any type of crisis in Indiana.

CALL 288-HELP

Our 24/7 crisis support line is available to provide immediate, confidential assistance—listening, offering encouragement and support to those in need.

VISIT OUR WEBSITE

Visit A Better Way's website to explore our services and programs, providing valuable information on domestic violence, sexual assault, and suicide prevention.



Our Services

Domestic Violence & Sexual Assault

We provide shelter service and mobile advocacy to survivors of domestic violence and sexual assault in Blackford, Delaware, Fayette, Henry, Jay, Randolph, Union, and Wayne counties.

SAFE SHELTER

We provide safe shelter, services, and support to survivors of domestic violence and sexual assault in an eight-county area.

SUPPORT GROUPS

Weekly support groups are provided to survivors of domestic violence and sexual assault, along with a separate children's group.

COUNSELING SERVICES

Counselors are available to provide compassionate trauma-informed care.

MOBILE ADVOCACY

Advocates provide flexible meeting locations, striving to accommodate and customize services based on individual survivor needs.

LEGAL RESOURCES

Advocates are available to assist survivors with filling out protective orders, accompaniment to court, and legal rights education.



Rape Crisis Center
Children's Programs
Violence Prevention
Crisis Support Line

ADDITIONAL RESOURCES >>



Volunteer

Direct Service Volunteer

Our direct service volunteers work alongside staff and provide services to survivors and their children in the areas of crisis intervention, child care, transportation, and emotional support. Direct service volunteers also assist in call handling, office work, and more.

Children's Program Volunteer

Our children's program volunteers provide services to children of all ages under the direction of the children's program staff. This includes child care, emotional support, homework help, and assistance with enrichment activities.

Indirect Service Volunteer

Our indirect service volunteers provide support to the agency that does not involve working with survivors, but rather the manual labor, clerical work, and other duties that improve the function and operation of the organization.

Apply Online!